

**2 sets of Gas-Engine Mitsubishi GS16R-PTK 845kw 50hz 1500rpm  
6600V**

**Specification:**

Number: 2 sets

Item: Gas-Engine generator

**ENGINE:**

**Maker: Mitsubishi**

**Model: GS16R-PTK**

Year: 2003

Output: 845kw

**GENERATOR:**

**Maker: Nishishiba**

Year: 2003

Output: 1,056.25kVA(845kw)

Voltage: 6,600V

Frequency: 50Hz

Speed: 1,500rpm

Pole: 4P

**Total used hours:**

As of Dec 3<sup>rd</sup>, 2018

No.1: 77,940hrs

No.2: 55,147hrs.

**Condition:** Now operation at site by the perfect condition and Scheduled to operate at site till Apr 2019.

**2 sets of Gas-Engine Mitsubishi GS16R-PTK 845kw 50hz 1500rpm  
6600V**

**Overhaul & Maintenance:**

Overhaul: Feb, 2018

Maintenance work: **checking all condition every 3 months**

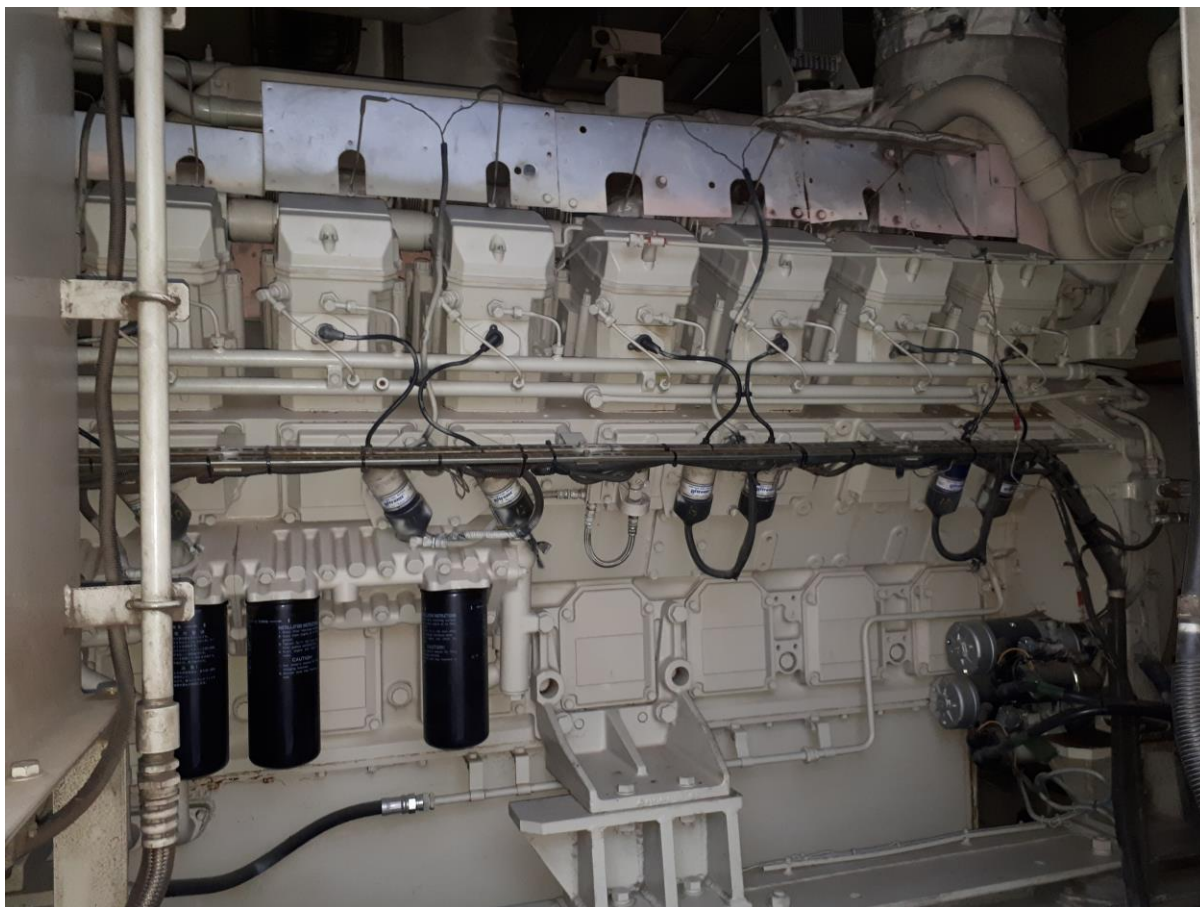
Delivery: Apr, 2019

All auxiliary of inside of power plant are included.

Outside of equipment's are depend on the buyer`s inquiry by the extra cost.

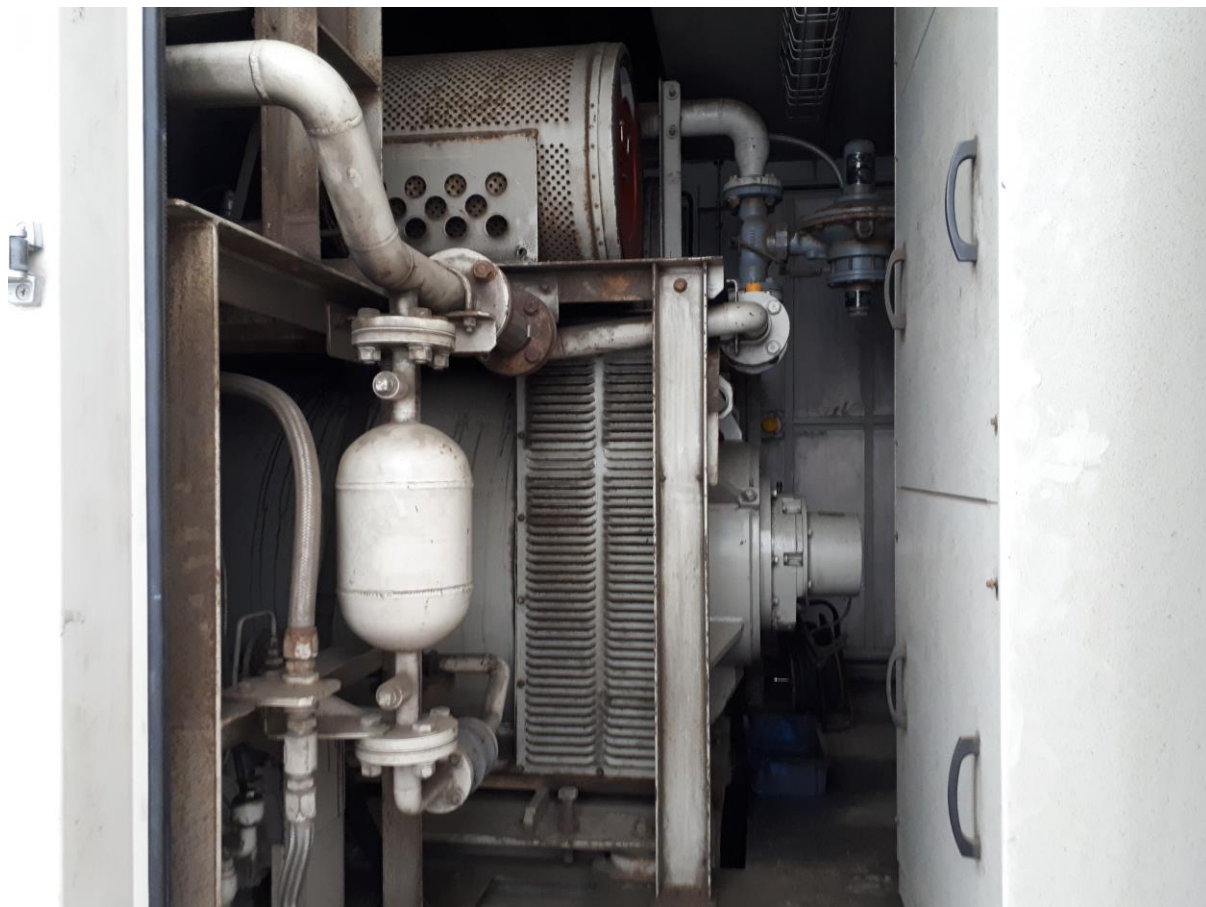


2 sets of Gas-Engine Mitsubishi GS16R-PTK 845kw 50hz 1500rpm 6600V





2 sets of Gas-Engine Mitsubishi GS16R-PTK 845kw 50hz 1500rpm  
6600V



2 sets of Gas-Engine Mitsubishi GS16R-PTK 845kw 50hz 1500rpm 6600V





2 sets of Gas-Engine Mitsubishi GS16R-PTK 845kw 50hz 1500rpm 6600V







**2 sets of Gas-Engine Mitsubishi GS16R-PTK 845kw 50hz 1500rpm  
6600V**

